



Governing Body Full Annual Report to the Parents 2024-2025

Chair's Foreword

It has been a pleasure, this past year, to see school life fully return to the 'normal' hustle and bustle of activity after several years of challenging disruption and uncertainty. School concerts, day and residential trips, sports day, Friends of the School events and community outreach activities have all returned to punctuate the progress of the school year, and which the children enjoy so much as they grow up together.

There have also been significant challenges in the year gone by. It will have escaped nobody's attention that financial constraints continue to squeeze school budgets across Wales. Parc Y Llan is no exception and we have needed to respond to this challenge to ensure that the budget we are allocated is balanced with planned expenditure, while maintaining our focus on delivering a consistently high standard of education and wellbeing.

I and my fellow governors have been able to visit the school more frequently to carry out our duties, to talk to the children and the staff. It is abundantly clear to governors that Parc Y Llan is a happy school with pupils who grow in confidence every day, nurtured by a very caring team of staff who are truly invested in the children's education and wellbeing. If you would like to see the day-to-day activity of the school for yourself, the school is keen to invite parents and carers, and members of the local community, into school to support school priorities such as reading. If you are interested, please do contact the school office to discuss arrangements.

Due to our Estyn inspection which took place in June 2024 which was highly successful and many aspects of the school were deemed as 'outstanding'. The school was selected by Estyn to take part in a National Thematic Study, focusing on Teaching and Learning to share our good practice with other schools in Wales. Our attendance target for the 2024-2025 year is 95%, unfortunately this was not met and will remain as a priority.

You can view our full report by looking at the school website or by visiting the Estyn website. You can also click on this link.

<https://estyn.gov.wales/system/files/2024-07/Inspection%20report%20Ysgol%20Parc%20Y%20Llan%202024.pdf>

Parc Y Llan's success is deeply rooted in the support of the community it serves. I want to express my gratitude to all members of the school community for their ongoing support as we look forward to another prosperous school year ahead.

Dr. Neil Henney

Chair of Governors

Ysgol Parc y Llan

Our School Mission Statement

At Ysgol Parc y Llan we create a nurturing, happy environment where all our learners are encouraged to find and follow their individual strengths, to become confident and ambitious learners, to always.....

'Reach for the Stars'.

Our Aims are that through the fostering of values, our children...

- Are happy and healthy; they understand the ethos of honesty, pride and commitment.
- Respect themselves and others; they show citizenship and empathy towards their community.
- Value learning as an enjoyable and life-long journey; they progress with confidence across the curriculum.
- Co-operate and contribute as part of a team; they listen, reflect, respond and are enthusiastic communicators.
- Are highly motivated; they set their own challenges in order to fulfil their potential.
- Respect and take responsibility for their environment; they think globally and act locally.

This is being achieved through our commitment to...

- High quality teaching and learning in a safe and inspirational environment.
- A calm, secure and ordered community with equal access to learning for all.
- A broad and balanced curriculum that, develops skills, knowledge and understanding through using the experience and abilities of everyone.
- Positive working relationships with peers, adults, our local and wider community.
- Encouraging children to be independent and responsible for their own actions.
- Developing a sense of awe and wonder, and respect for the beliefs of our diverse community.

Our School Values



Our Motto

'Reach for the Stars'

Our Mission Statement

At Ysgol Parc Y Llan we create a happy, nurturing environment where all our learners are encouraged to follow their individual strengths, to become confident and ambitious learners and to always...

'Reach for the Stars'.

Our Core Values

Happiness—We want everyone to feel happy, secure and safe, as part of our school community.

Kindness—We are kind, caring and considerate to each other and the world around us.

Ambition—We try our best in all that we do. We are always learning and striving to achieve new things. We never give up!

Honesty—We have the courage to always tell the truth.

Value—We value ourselves, each other, our thoughts and ideas and everything that makes us special and unique.

Togetherness—We support each other in all that we do. We are not just a team, we are a family.

Ysgol Parc y Llan Governing Body

The following table details the members of the Ysgol Parc Y Llan Governing Body and the dates of their current membership terms:

Governor	Category	Start Date	End Date
Neil Henney (Chair)	Parent	09/2021	07/2025
Edyta Lovett (Vice-Chair)	Parent	09/2021	07/2025
Sarah Kirby	Parent	09/2021	07/2025
Sam Lauder	Parent	10/2022	09/2026
Helen Warburton	Community	10/2022	09/2026
Christine Hughes	Local Authority	09/2023	07/2027
Jeanette Wilkes	Community	09/2023	07/2027
	Staff		
Hanna Roberts	Teacher	09/2021	07/2025
Meilir Ashford	Headteacher	-	-

Governing Body Appointments

In line with statutory regulations (The Government of Maintained Schools (Wales) Regulations 2005, Schedule 1), the Governing Body elected Neil Henney as Chair of Governors and Edyta Lovett as Vice Chair of Governors. Cllr. Christine Hughes was co-opted as a Local Authority governor.

YSGOL PARC Y LLAN, TREUDDYN (151) **FINANCIAL OUTTURN 2024/2025**

BUDGET HEADING	BUDGET 2024/2025	EXPENDITURE 2024/2025	DIFF + OR (-)
BALANCE FROM 2023/2024	69,450		69,450
EMPLOYEES	505,869	618,763	- 112,894
PREMISES	58,432	42,646	15,786
TRANSPORT		-	-
SUPPLIES	17,829	24,135	-6,306
ADULT MEALS/LINK COURSES		3,047	-3,047

SERVICE LEVEL AGREEMENTS	28,796	29,110	-314
INCOME		-132,581	132,581
TOTAL 2024/2025	680,376	585,119	95,257

The full Governing Body approves the budget for each year, under advice from the Finance Committee. The Governing Body's Finance Committee regularly reviews the school's expenditure. The budget of the school is in a healthy position, with a projected small contingency surplus enabling the school to be prepared for unforeseen expenditure needs.

Parent Governor Elections

There will be governor vacancies this year.

Attendance

Attendance is something that is very important to the school and actions are in place to continue to improve pupil attendance in cases where this falls short of expectations. This was a recommendation from our recent Estyn inspection report. Our whole school attendance for the academic year was 92%.

School Dates

Autumn Term	2025-256
Term Start	3 rd September 2025
Half Term Close	24 th October 2025
Half Term Open	4 th November 2025
End of Term	19 th December 2025

Spring Term	
Term Start	6 th January 2026
Half Term Close	13 th February 2026
Half Term Open	23 rd February 2026
End of Term	27 th March 2026

Summer Term	
Term Start	13 th April 2026
Half Term Close	21 st May 2026

Half Term Open	1 st June 2026
End of Term	17 th July 2026

Session Times

SCHOOL GATES OPEN 8.45am

Nursery: 8.55 am to 11.30 am

Foundation Phase: 8.55 am to 3.00 pm

KS2 (Juniors): 8.55 am to 3.10 pm

Community Links

Friends of the School

Ysgol Parc y Llan benefits from a proactive and hardworking “Friends of the School” (FOS) which aims to develop effective relationships between, staff, parents and others associated with the school while engaging in activities which support and benefit the school and advance the education and well-being of the children. FOS provides a range of activities throughout the year which contribute immensely to the community of the school. These include the Christmas fairs, discos for infants and juniors, and a whole host of other things. The FOS is only as successful as the parents and teachers make it. If you could give some time to help with one or two activities, even if it is just wrapping a present or two or doing a quick run to get some hot-dogs for an event that would be greatly appreciated.

Teigrod Terrig After School Club

Our After School Club supports parents who are working or training. The Club is well organised with trained Staff and a supportive Management Committee, which meets at least once a term with an A.G.M in the Summer term. It is regularly inspected by the Care Standards Inspectorate for Wales and has consistently been commended for its high standards. The club is shared between Ysgol Parc y Llan and Ysgol Terrig.

Free Breakfast Club

Our free breakfast Club has always been successful and also supports parents who are working or training. We currently make the club ‘free for all’ making sure our pupils have the opportunity for a good nutritional breakfast. Both schools also share this club.

Castell Alun Consortium

Ysgol Parc y Llan works closely with the other Castell Alun Consortium primary schools and with the other local secondary schools. This relationship benefits the school by sharing practice and skills and by allowing pupils to interact with peers in other schools. We have many working groups which provide staff with high quality professional learning opportunities.

Community Participation

Pupils and staff have been involved with projects which have included ICT, Drama and STEM. In addition to links with local community groups, the Community Council and community police, Ysgol Parc y Llan has also developed or maintained links with local business e.g. Swans Farm Shop, the local village shop and Carreg Milk Farm. The school hosted the annual Remembrance Service for the community at the Cenotaph.

Ysgol Parc y Llan has also developed or maintained links with; learners from other local high schools on work experience; learners and students from Coleg Cambria and the High Schools. The school performed a West End Musical - Matilda and invited the residents of Hafan Deg. Children helped the elderly in planting vegetables in their allotments and went litter picking around the village.

Sporting Activity

After-school activities included sports (netball, football, athletics and rounders), cooking, forest-school, chess and crafts & sewing.

Sport plays a key part in our school curriculum with a range of activities offered and pupils are given the opportunity to compete against other schools in football, netball, rugby and athletics. During the year significant progress has been made by all pupils attending clubs. All school teams were successful in a range of tournaments and competitions.

School Prospectus

Ysgol Parc y Llan's prospectus is updated at least once every two years. The last update was Summer Term 2025 for 2025-26 entry and will be reviewed again in the coming year if any changes are needing to be made. The Treuddyn Under 5's prospectus has also been updated. The most up to date prospectus is always available from the school website or directly from school on request.

Language Category and Use of Welsh

The children follow a second language Welsh course as the predominant language used at Ysgol Parc y Llan is English. The children in the Foundation phase and KS2 sections are provided with discrete Welsh sessions supported by the use of incidental Welsh. Welsh is also used explicitly in other subject areas such as in Physical Education for giving instructions. We are always working hard to further develop Welsh at our school. We have now gained the Bronze Award for Cymraeg Campus and we were highly praised in our recent Estyn Inspection report. This year we will be working hard to gain the Silver Award.

Toilet Facilities

All toilet areas have been refurbished and are maintained to a very high standard. We have 4 sets of toilets that are cleaned daily.

Strategy Implementation and Policy Reviews

Implementation and review of School Improvement Plan

Areas of focus have included work in improving attendance, bilingualism, developing transition between year groups as well as further developing planning, systems and processes for the implementation of the new curriculum.

Policy Reviews

Policies are reviewed and updated as part of a rolling programme. These include (but are not limited to): Safeguarding, Child Protection, Health and Safety, School Admissions, Anti Bullying.

Copies of our policies are available on request from school and a variety of key policies are available on our school website – www.ysgolparcyllan.com or by request from the school office.

Curriculum Organisation and Delivery (including ALN and PDG)

Curriculum – Foundation Learning

The 4 Core Purposes

Our School Curriculum is designed for young people to develop as:

- Ethical, informed citizens
- Healthy, confident individuals
- Ambitious, capable learners
- Enterprising, creative learners

We deliver the National Curriculum through the following areas:

- Language, Literacy and communication
- Mathematics and Numeracy
- Humanities
- Science and Technology
- Expressive Arts
- Health and Well-Being

At the centre of the curriculum framework lies the holistic development of the children and their skills across the curriculum, building on their previous learning, experiences, knowledge and skills.

Our pupils are set targets and tasks that match their needs and abilities.

Our Curriculum and Vision



OUR NEW CURRICULUM



MISSION STATEMENT

At Ysgol Parc y Llan we create a nurturing, happy environment where all our learners are encouraged to find and follow their individual strengths, to become confident and ambitious learners, to always 'Reach for the Stars'.

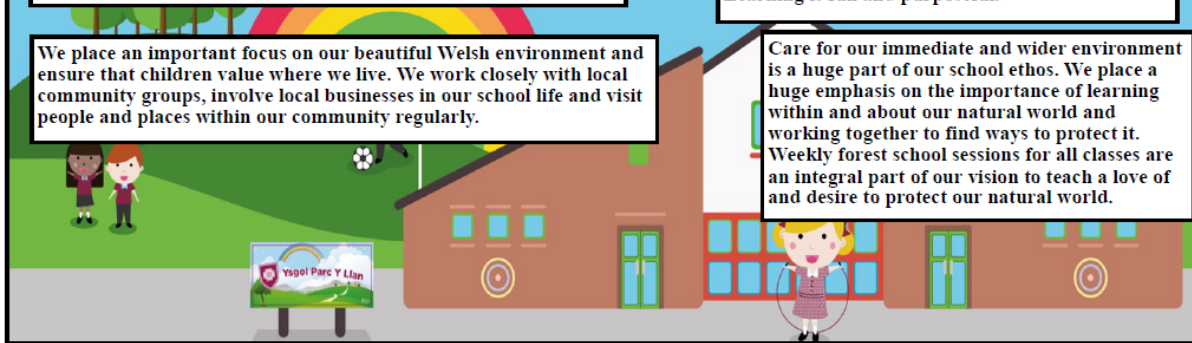
Our Vision

At Ysgol Parc Y Llan all staff and pupils work together to create a close knit, nurturing, friendly and happy environment. Wellbeing is at the heart of learning at Ysgol Parc Y llan. When children feel happy and secure they are able to learn and reach their full potential. Wellbeing is built into daily learning and children are taught to acknowledge and address their feelings and those of their peers.

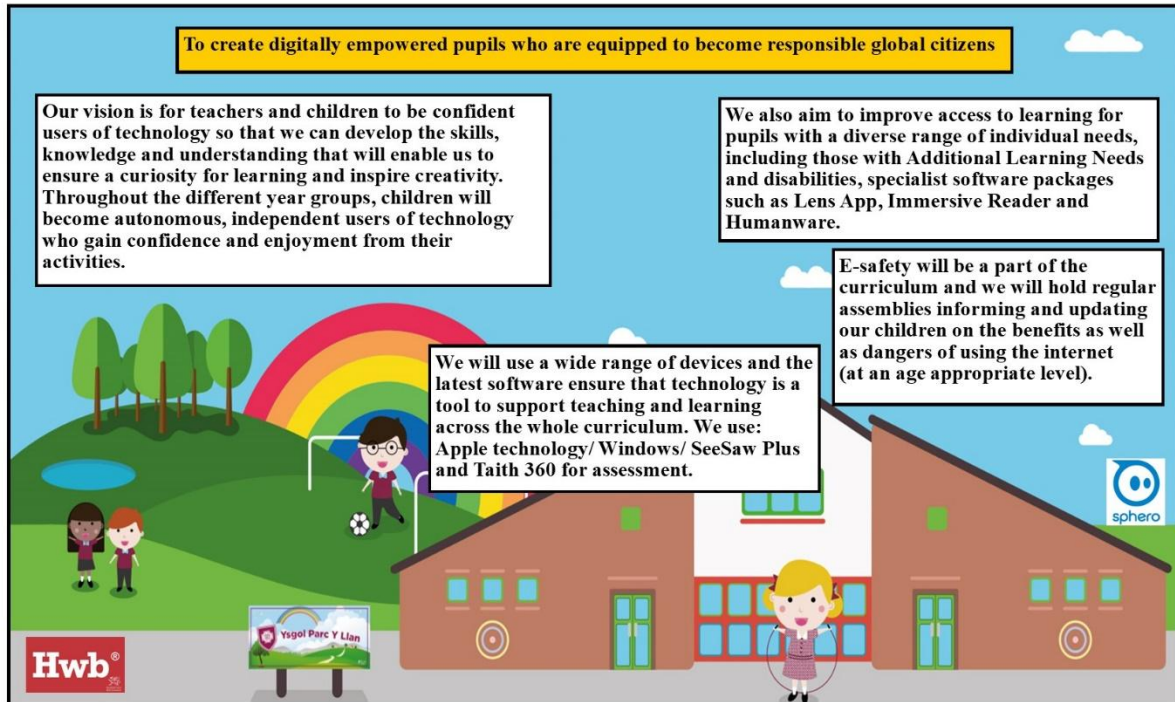
When children feel secure and happy and fully involved in their learning, they can reach their full potential. Pupil voice is integral to the way we plan, teach and assess. Children choose the direction of their learning, ensuring that learning is purposeful, open ended and challenges them to achieve. Learning is fun and purposeful.

We place an important focus on our beautiful Welsh environment and ensure that children value where we live. We work closely with local community groups, involve local businesses in our school life and visit people and places within our community regularly.

Care for our immediate and wider environment is a huge part of our school ethos. We place a huge emphasis on the importance of learning within and about our natural world and working together to find ways to protect it. Weekly forest school sessions for all classes are an integral part of our vision to teach a love of and desire to protect our natural world.



A questionnaire was sent out to parents to evaluate the school's progress in the past 12 months and the feedback was very positive. We thank you for your kind comments and feedback. This helps in driving school improvement for the forthcoming year. We will shortly be sending another feedback questionnaire to parents.



Additional Learning Needs

Additional Needs is the term used at Ysgol Parc y Llan to describe provision supported in school which is additional to, or different from, that provided by the already differentiated curriculum delivered at the school. Ysgol Parc y Llan follows a graduated approach to support as recommended for the Primary phase in the Special Educational Needs Code of Practice.

Identification, monitoring, support and additional provision (where appropriate) are provided to pupils throughout all stages of the Primary phase at Ysgol Parc y Llan. The school employs an Additional Needs Coordinator, this post is currently held by Mr Ashford. The link governor for additional learning needs is Mrs H Warburton.

Full details of the school's policy on additional needs can be found in the Additional Needs policy on request to the school or by speaking to Mr. Ashford.

Pupil Deprivation Grant (PDG)

The purpose of the PDG is to improve outcomes for learners eligible for free school meals (FSM) and Looked After Children (LAC). It is intended to overcome the additional barriers that prevent learners from disadvantaged backgrounds achieving their full potential. The Welsh Assembly Government allocates additional funds to all schools in Wales based on the pupils on roll who take free school meals or who are looked after children. Every school is required to account for its allocation by creating a budget and accounting for it.

The school typically uses the grant for identified staff training, support and resources

primarily for small groups, one-to-one or targeted learning programmes. Full details of the school's use of the PDG is published on the school website in the Summer term. In 2023-24 Ysgol Parc y Llan were allocated a total Pupil Development Grant of £17,250. All learners were all offered free school meals by the end of the Easter term 2024.

Healthy schools

As a school we encourage pupils to eat and drink healthily within school, during snack time and lunch time and to share this understanding outside of school. The school has attained Phase 3 of the Healthy School Scheme and continues working towards the next phase. Ysgol Parc y Llan, with the support from parents are working diligently to become a 'Nut Free' School.

Inclusion

The school prospectus clearly states our commitment to equal opportunities and inclusion for all. Creating an inclusive culture and establishing inclusive values is very important to all at Ysgol Parc Y Llan.

The school treats all pupils equally, following the admission procedures adopted by Flintshire County Council Education Authority. The school has taken many steps to enable all members of the school community to have equal access. We pride ourselves on providing effective support for pupils who need extra help and provision to access a mainstream education system.